

GCS

Communication Gateway for Domino

Communication Gateway for Domino is one of GlobalComServer's e-mail environments

By implementing the GlobalComServer fax and/or SMS service into your e-mail system, you can improve information exchange not only within your business, but also with outside partners.



You'll have all the advantages of e-mail for your faxes and SMS messages. Just look at what you can do

- ▶ Send a fax or SMS message the same way you send e-mail
- ▶ Store your public and private directories (mail database)
- ▶ Fax Domain created on Lotus Notes
- ▶ Process transmissions and receptions automatically
- ▶ Take advantage of Least Cost Routing (messages sent at the least cost) through the Internet, Intranet, Extranet, etc.
- ▶ Attach documents in their original format (Office, SmartSuite, HTML, Adobe, PCL5E, Postscript and over 200 others)
- ▶ Choose your own cover page and sending times
- ▶ Your transmission and reception records are available automatically in your e-mail system
- ▶ Remote management module
- ▶ Routing of incoming faxes by DID, line, OCR, etc.

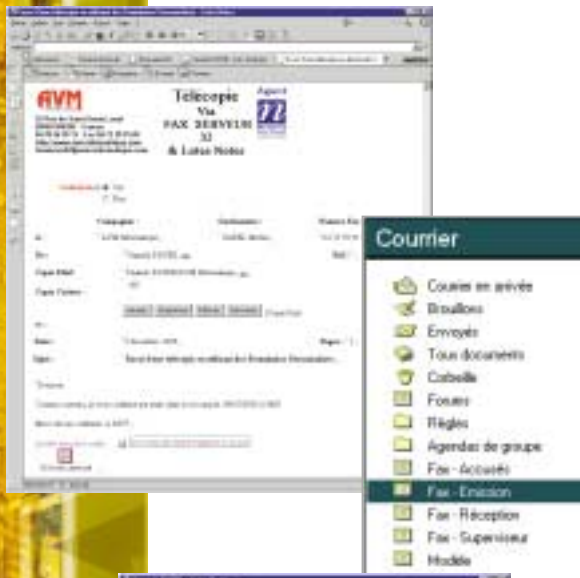
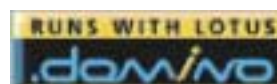
No software installation needed on the client computer

Administration in Domino

- ▶ GCS Domino Admin gère vos profils utilisateurs, vos tables de routage, vos pages de garde ... etc. Grâce à son intégration dans les bases Notes GCS Domino Admin vous simplifie les tâches d'administration

Workflow Fax - Fax Forms

- ▶ Customised fax form for each service
- ▶ Add a signature
- ▶ Fax preview before sending
- ▶ Signature management in Workflow mode



▶ AVM informatique
52, rue de St Genis Laval - 69540 Irigny
Tél. 04 78 56 59 13 - Fax 04 72 39 91 69
<http://www.avm-informatique.com>
e-mail: gcs@avm-informatique.com